

## **Nouvelles et mises à jour :** **News & Updates/**

- CRECS Professor Wins Award for Leadership in Evaluation p. 2
- Un professeur du CRSEC gagne le prix du leadership en évaluation p.2
- 2006Community Forum on Homelessness p. 3
- Dr. David Hawkins Visits Ottawa January 16<sup>th</sup>, 2007 p.3
- University of Ottawa Hosts the 21<sup>st</sup> Annual Kelly Evaluation Conference p.4
- Third Report Card on Ending Homelessness Released February 27, 2007 p. 4

## **Feature Articles/ Articles principaux:**

- Ne pas avoir de logement nuit à la santé des enfants p.5
- Youth Satisfaction with Out-Of- Home Placements p.6
- A Research Study on Pre-Trial Court Diversion Services for People with Severe Mental Illness p.7
- Community-Campus Partnerships: An Overview and Personal Impressions p. 8

## **Événements / Upcoming Events**

## **Mot du rédacteur en chef / From the Desk of the Editor**

Nous sommes heureux de présenter, dans ce premier numéro de 2007, une variété de sujets reflétant les nombreux projets de recherche et engagements communautaires du Centre de recherche sur les services éducatifs et communautaires (CRSEC), par exemple :

- des articles où le professeur Robert Flynn parle de certaines des causes fondamentales de l'itinérance des jeunes liées aux abus et à la négligence pendant la prime enfance et où Cynthia Vincent et Marie-Pierre Paquet discutent de l'importance d'accorder un droit de parole aux jeunes retirés de leur famille naturelle concernant leur placement et les plans d'intervention;
- des reportages sur des événements récents comme le Forum communautaire sur l'itinérance 2006 et la visite du Dr. David Hawkins à Ottawa pour une présentation sur la science de la prévention et bien davantage;

- des félicitations au professeur Brad Cousins, codirecteur et chercheur principal du CRSEC, pour son prix Karl Boudreault (tous les détails à l'intérieur).
- Le CRSEC a sept ans! À l'Université d'Ottawa, le septième anniversaire marque un tournant pour les instituts et les centres de recherche, qui doivent se soumettre à un examen externe indépendant visant à assurer l'atteinte de leurs objectifs de départ et à évaluer plus en détail ses possibilités de contributions majeures. Récemment, le CRSEC a procédé à une autoévaluation et nous attendons avec enthousiasme de rencontrer le comité d'experts internationaux qui complètera ce processus d'évaluation au cours de l'année 2007.

Comme toujours, nous vous invitons à nous faire parvenir vos commentaires et vos questions à l'adresse suivante : [dvincent@uottawa.ca](mailto:dvincent@uottawa.ca).

### **IMPACT Rédacteur / Editor**

David Vincent

### **IMPACT Assistante / Editorial Assistant :**

Meagan Miller



In this first issue of 2007 we are pleased to include a variety of articles reflecting the various research projects and community engagements by the Centre for Research on Educational and Community Services (CRECS).

- Professor Robert Flynn speaks to some of the root causes of youth homelessness associated with early child abuse and neglect, while Cynthia Vincent and Marie-Pierre Paquet discusses the importance of giving youth in out-of-home-care a voice in their placement and care plans.
- Recent events are reported on, such as the 2006 Community Forum on Homelessness and Dr. David Hawkins visit to Ottawa to present on the state of prevention science, plus much more.
- Congratulations to Professor Brad

Cousins, CRECS Co-Director and Senior Researcher, on receiving the Karl Boudreault Award. See details inside.

- CRECS is now seven years old! At the University of Ottawa, the seven year point is a major event for research institutes and centres; this is the time when a centre undergoes an independent external review to insure that it has achieved its original goals and to further appraise its ongoing potential for significant contributions. Recently, CRECS completed a Self-Assessment as part of this process and we look forward to meeting with an international panel of experts later in 2007 to complete the evaluation.

As always, your comments and questions are welcome and can be directed to [dvincent@uottawa.ca](mailto:dvincent@uottawa.ca).



## Nouvelles et mises à jour / News and Updates/ Un professeur du CRSEC gagne le prix du leadership en évaluation

Brad Cousins, professeur à la Faculté d'éducation et codirecteur du CRSEC, a reçu dernièrement le prix Karl Boudreault pour le leadership en évaluation, remis par la Section régionale de la Capitale nationale de la Société canadienne d'évaluation (SCÉ). Brad, qui fait partie des principaux contributeurs au domaine de l'évaluation, a joui d'une grande considération auprès de ses pairs. Ses travaux sur l'évaluation participative et le renforcement de la capacité d'évaluation sont reconnus partout dans le monde.

Comme professeur, Brad continue de jouer un rôle actif auprès de nombreux étudiants diplômés qui poursuivent des études en évaluation, combinant l'accompagnement, le mentorat et l'enseignement. Dernièrement, il a participé à la création d'un certificat d'études supérieures en évaluation de

programmes, offert par les Facultés des sciences sociales et d'éducation de l'Université d'Ottawa. Au cours des dix dernières années, il a encouragé et soutenu la participation d'étudiants à deux conférences régionales sur l'évaluation, leur offrant l'occasion de présenter leurs recherches, de réseauter et d'échanger avec d'autres étudiants et des érudits dans l'État de New York et en Ontario. Depuis 2003, il agit à titre de président du Concours de dissertation étudiante présenté de concert par la SCÉ et le CESEF et encadre régulièrement des équipes participant au Concours de simulation en évaluation de la SCÉ.

Brad a également été coprésident du programme de l'assemblée conjointe de la SCÉ et de l'AEA (American Evaluation Association) d'octobre 2005 à Toronto. Cette assemblée, qui a réuni 2 400 délégués, a été le

plus grand congrès sur l'évaluation. Il a aussi animé un grand nombre d'ateliers de perfectionnement professionnel pour la SCÉ, le Forum sur le rendement et la planification (FRP) et des organismes internationaux comme l'UNESCO.

En tant que rédacteur en chef de la *Revue canadienne d'évaluation de programme* depuis 2002, Brad est membre d'office du Conseil national de la SCÉ et participe activement au débat actuel concernant la délivrance de titres et de certificats en évaluation. Il a aussi rédigé, en collaboration avec le professeur Tim Aubry, un rapport important sur l'assurance de la qualité de l'évaluation pour le Secrétariat du Conseil du Trésor.

[http://www.tbs-sct.gc.ca/eval/tools\\_outils/QAE-AOE/rgeqa\\_e.asp](http://www.tbs-sct.gc.ca/eval/tools_outils/QAE-AOE/rgeqa_e.asp)



### CRECS Professor Wins Award for Leadership in Evaluation



Professor Brad Cousins,  
Co-Director of CRECS

Professor Brad Cousins, Faculty of Education, and Co-Director of CRECS recently received the 'Karl Boudreault Award for Leadership in Evaluation' from the National Capital Chapter of the Canadian Evaluation Society. Brad has achieved significant recognition by his peers as one of the leading contributors to the field of evaluation. His work in participatory evaluation and evaluation capacity building is

recognized internationally. As a Professor, he continues to play an active role in coaching, mentoring and teaching a large number of graduate students studying evaluation. He recently co-developed the graduate certificate in program evaluation offered by the University of Ottawa Faculties of Social Sciences and Education. For the past ten years he has encouraged and supported student participation in two regional evaluation conferences, giving them an opportunity to showcase their research, network and interact with students and evaluation scholars in upstate New York and Ontario. He has served as chair of the CES/CESEF Student Paper contest since 2003 and regularly coaches teams in the CES Student Case Competition.

Brad was the Co-program chair of the CES/AEA joint meeting in Toronto, October, 2005, which, at 2,400 delegates, is the largest evaluation conference ever held. He has also led numerous professional development workshops for CES, Performance and Planning Exchange (PPX) and international organizations such as UNESCO. As editor-in-chief of the Canadian Journal of Program Evaluation since 2002, Brad is *ex officio* member of the CES National Council and is directly involved in current deliberations about evaluator credentialing. He recently co-authored with Professor Tim Aubry a major report for Treasury Board Secretariat on evaluation quality assurance.

[http://www.tbs-sct.gc.ca/eval/tools\\_outils/QAE-AOE/rgeqa\\_e.asp](http://www.tbs-sct.gc.ca/eval/tools_outils/QAE-AOE/rgeqa_e.asp)

## 2006 Community Forum on Homelessness

Each year, in honour of National Housing Day on November 22nd, the Centre for Research on Educational and Community Services, at the University of Ottawa works closely with the Alliance to End Homelessness in Ottawa and the Housing Branch of the City of Ottawa to host a Community Forum on Homelessness. The intent of the Forum is to present research and offer training that can contribute to developing more effective social programs and policies addressing

homelessness. The 2006 Community Forum, held in Tabaret Hall at the University of Ottawa, had an impressive array of speakers and displays. Topics included identifying facilitators and barriers for individuals and families to exit homeless, resilience among homeless youth, community integration of homeless women, costs of homelessness. Each year the Forum manages to set the bar a little higher in terms of the presented research and delivered training.



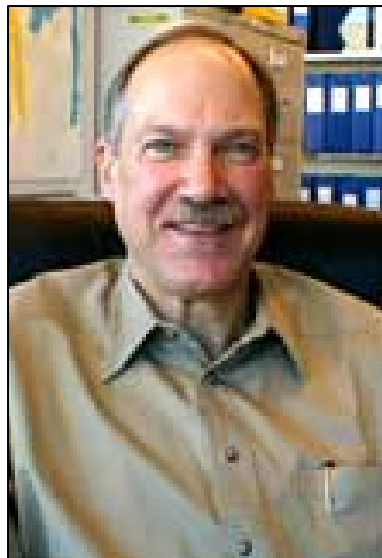
Tim Aubry, Senior Researcher with the Centre for Research on Educational and Community Services discussing what helps formally homeless people achieve housing stability.

## Dr. David Hawkins visits Ottawa, January 16<sup>th</sup> 2007

The Council Chambers at Ottawa City Hall were filled to capacity, and based on the evaluation report on Dr. David Hawkins' presentation, participants found the event lively, well received and informative. Dr. Hawkins was invited to Ottawa by the Centre for Research on Educational and Community Service (University of Ottawa). He carries the title of *Endowed Professor of Prevention* and he is the Founding Director of the Social Development Research Group, School of Social Work, University of Washington, Seattle. As the Principal Investigator of the Community Youth Development Study, with the goal of testing the effectiveness of the

Communities That Care (CTC) prevention system, Professor Hawkins is a recognized authority on prevention science. Since the beginning of his professional career, the practice of prevention (which often had no effect on outcome at best, or in some cases even contributed to negative results) has been elevated to a science with demonstrated efficacy. David states that to "prevent a problem before it happens, the factors that predict the problem must be changed."

For more information on David Hawkins presentation contact the Centre for Research on Educational and Community Services at [crsc@uottawa.ca](mailto:crsc@uottawa.ca).



Dr. David Hawkins, Principal Investigator of the Community Youth Development Study.



## University of Ottawa Hosts the 21<sup>st</sup> Annual Kelly Evaluation Conference

Marzieh Hassantafghodtari & Sumbal Malik



Keynote Speaker: Jennifer Greene

it was organized by graduate students with the goal of providing opportunities to present original research and to network with professionals in the evaluation community.

Founded at Cornell University, the Kelly Conference honours its main contributor Edward F. Kelly for his contributions to the field of evaluation. Participating universities from Canada and the United States include the University of Ottawa, OISE (Ontario Institute for Studies in Education) University of Toronto, Queen’s University, Cornell University, SUNY Albany, and Syracuse University.

Each year, the Kelly Conference hosts prominent speakers from the academic community. This year, the University of Ottawa had the pleasure of hosting Dr. Jennifer Greene, (University of Illinois) as its keynote speaker. Dr. Greene seeks to advance the theory and practice of alternative forms of evaluation, including qualitative and mixed-method evaluation approaches.

We look forward to providing a more in-depth review of the Kelly Evaluation Conference in the next edition of Impact as well as alerting our readers to the planning for the next conference.

The University of Ottawa was proud to host the 21<sup>st</sup> Annual Edward F. Kelly Conference on April 20<sup>th</sup>, 2007. Graduate students and professionals in the field of evaluation came together to share ideas about current theory and practice pertaining to the field of evaluation. One significant aspect of the conference is that



## Third Report Card on Ending Homelessness Released February 27, 2007

As part of its mission to conduct research that can inform public policy for marginalized populations, researchers and students from the Centre for Research on Educational and Community Services have made important contributions to the Alliance to End Homelessness in

Ottawa’s Annual Report Card on homelessness. On February 27, the Third Annual Report Card on Ending Homelessness in Ottawa was released. This document provides a wealth of information related to homelessness and what has been accomplished towards ending homelessness.

To review the Report Card, visit the Alliance to End Homelessness website at [www.endhomelessnessottawa.ca](http://www.endhomelessnessottawa.ca) or contact us at [csec@uottawa.ca](mailto:csec@uottawa.ca).

## Articles principaux / Feature Articles

# Ne pas avoir de logement nuit à la santé des enfants

**1163 enfants ou eu à séjourner dans un refuge d'urgence en 2006.**

**Robert Flynn**

Il est choquant de constater que 615 familles, au total 1 163 enfants et 782 adultes, ont eu à séjourner dans un refuge d'urgence en 2006, pour un séjour moyen de 31 jours.

Ce nombre serait encore plus élevé n'eût été le succès remporté par le Programme de prévention de perte de logement, un programme communautaire qui aide les familles à conserver leur logement.

En 2006, le financement accordé par le gouvernement fédéral et le gouvernement provincial a permis d'aider 9 143 ménages à conserver leur logement à Ottawa.

Selon l'*Ottawa Child/Youth Housing Advocacy Initiative*, un projet résultant d'un partenariat entre le secteur de la santé et les spécialistes du logement, les familles à faible revenu qui essaient d'assurer à leurs enfants les produits de première nécessité tels que le logement éprouvent de grandes difficultés sur le plan de la santé.

### Les soins de santé dans les refuges pour familles

Grâce à un partenariat entre le *Somerset West Community Health*

*Centre et le Pinecrest-Queensway Health and Community Services*, les familles itinérantes qui séjournent dans les deux refuges pour familles relevant de la ville peuvent maintenant recevoir des soins dispensés par des infirmières praticiennes.

Selon l'expérience des infirmières travaillant dans ces refuges, les familles itinérantes semblent éprouver un plus grand nombre de problèmes physiques, psychologiques et sociaux que les familles ayant un logement. En plus des préoccupations habituelles en matière de santé qui sont le lot de toutes les familles, les parents itinérants souffrent de dépression et d'insomnie, de problèmes reliés qui règnent dans leur vie.

Les parents ne sont pas itinérants par choix.

Les infirmières praticiennes entendent ces parents parler de leurs enfants et de la stigmatisation dont ils sont victimes à l'école. Les enfants ne veulent pas que leurs amis viennent les visiter; ils veulent éviter que quiconque sache où ils vivent. Les infirmières décèlent de nombreux problèmes de développement chez les enfants, mais l'attente est très longue avant d'avoir accès aux services appropriés.

Quand les familles réussissent à se reloger, elles n'ont pas plus accès aux soins de santé que le reste de la population, car peu de médecins acceptent de nouveaux patients.



Robert Flynn



Article printed with permission from the Alliance to End Homelessness. For the English translation of this article, visit: [www.endhomelessnessottawa.ca](http://www.endhomelessnessottawa.ca)

## Youth Satisfaction with Out-of-Home Care Placements

Cynthia Vincent & Marie-Pierre Paquet

### The Youth need a voice in their care

Researchers and practitioners working in the field of child welfare have increasingly recognized the importance of providing children and youth with an opportunity to voice their satisfaction and suggestions for improvement to their out-of-home care placements, as well as including them in the decisions concerning their development and care plans regarding their future.



One of the ways that the Ontario Children’s Aid Societies uses to solicit the opinions of youth in out-of-home care is through the Looking After Children (LAC) Project. LAC was originally developed in the United Kingdom to improve the quality of out-of-home care and assesses annually the progress of children in seven dimensions: health, education, identity, family and social relationships, social presentation, emotional and behavioral development and self-care skills. Dr. Robert Flynn, from the Centre for Research in Educational and Community Services, was instrumental in bringing LAC to Canada and adapting it for Canadian use. The Ontario Looking After Children Project (OnLAC) first began in 2001, and is a longitudinal study researching

developmental outcomes in youth involved with the child welfare system.

### What the research finds

Dr. Flynn’s research findings into placement satisfaction indicate that young people are generally satisfied with their placements, and that those who reside in foster homes are more satisfied than youth living in group homes. Nevertheless, the youth have made a number of recommendations for changes to enhance their life situations. Their suggestions for improvements centre around: the self of the young person (improving grades in school and physical appearance), birth family (more contact), foster family (improving relationships), change in type or location of the placement (independent living), physical features and surroundings of the placement (own bedroom), and the social features and climate of the placement (more freedom and less strict rules). Older youth, moving from care to independence, cite the need for additional resources to assist with the transition.

Out-of-home care is intended to improve the lives of youth who have been removed from living with their birth families. It is important to listen to their opinions and, where possible, incorporate

their recommendations, in order to demonstrate that their opinions have merit, to empower them and to encourage their participation in the decisions affecting their lives. Ongoing research investigating the issues of youth in out-of-home care is also valuable to assist practitioners in improving the immediate circumstances of the youth, as well as identify constructive changes in the child welfare system for those currently residing in out-of-home care and others who follow.

For further information on this, and other research, at the Centre, please contact [crsc@uottawa.ca](mailto:crsc@uottawa.ca).



Cynthia Vincent(top), Research Associate and Marie-Pierre Paquet (bottom), Research Assistant with the Centre for Research on Educational and Community Services.



## A Research Study on Pre-Trial Court Diversion Services for People with Severe Mental Illness

Jaclyne Smith & Tim Aubry



The Centre for Research on Educational and Community Services (CRECS) is collaborating on another research project with the Ottawa Branch of the Canadian Mental Health Association (CMHA Ottawa). The project is part of the Mental Health Systems Enhancement Evaluation Initiative (SEEI) in Ontario. SEEI is a four-year research initiative funded by the Ministry of Health and Long-Term Care (MOHLTC). Its purpose is to evaluate the effects of the significant investments made by the Government of Ontario over four years beginning in 2004/2005 in community mental health services. The initiative has nine research studies in different parts of the province. The studies are funded through the Ontario Mental Health Foundation and coordinated by the Health Systems Research and Consulting Unit of the Centre for Addictions and Mental Health.

The SEEI study in Ottawa focuses on an evaluation of CMHA Ottawa's Court Outreach Program. The Court Outreach Program is defined as a "**Full spectrum mental health and justice diversion program**" where clients can be referred through the Police/Mental Health Crises Team (**Pre-charge diversion**), the criminal justice system (**court diversion**) which includes pre-trial and post-conviction and the community. Individuals with severe mental illness who have

been charged with a criminal offence or in trouble with the law are diverted from the justice system to receive support services in the community. The bulk of court outreach services are delivered by a primary worker in the context of a case management relationship with the client. Clients of court outreach services also have access to the range of multidisciplinary treatment provided by CMHA Ottawa. CMHA's Court Outreach Program came into existence a little over 12 years ago as a response to the increasing number of mentally ill and homeless individual's coming into contact with the criminal justice system. It is important to note that CMHA provides an integrated treatment approach which enables all clients to have seamless access to a range of services delivered by CMHA including Concurrent Disorder Groups, DBT (Dialectical Behavioural Therapy), Psychiatrist, Nurses, Recreational Therapy, Vocational Rehabilitation and Housing Units. This integrated service approach further strengthens the ability to divert clients away from the criminal justice system not only in the context of existing clients of the court outreach program but all clients of the agency who come into contact with the judicial system.

The goal of this research to evaluate the extent CMHA's Court Outreach Program's services are being delivered as planned as well

as their effectiveness. Methods that are being used to assess program implementation include focus groups with key program staff, key informant interviews, client and family interviews, and analysis of administrative data on client and service characteristics. In order to examine program effectiveness, data collected by the agency on recidivism rates, mental health symptoms, alcohol and drug use, and community adaptation of clients will be analyzed.

The study is being conducted between May 2006 and October 2007. We expect the research to contribute new knowledge by describing a unique model of court diversion in which intensive community support is integrated into the diversion process. The findings will provide useful policy-relevant information to MOHLTC for replicating this type of program elsewhere in Ontario.

**Research Team for Evaluation of CMHA Ottawa's Court Diversion Services**

Tim Aubry, CRECS (Principal Investigator)  
John Sylvestre (CRECS) Co-Investigator  
Donna Pettey, CMHA Ottawa, Co-Investigator  
Marnie Smith, CMHA Ottawa, Co-Investigator  
Jaclyne Smith, CRECS, Project Coordinator



# Community-Campus Partnerships: An Overview and Personal Impressions

David Vincent



The Centre for Research on Educational and Community Services (CRECS) is an Organizational Member of Campus-Community Partnerships for Health (CCPH). I had the privilege of attending CCPH's 10<sup>th</sup> Anniversary Conference in Toronto, April 11-14. The theme of the conference was *Mobilizing Partnerships for Social Change*. The opening reception, held at the Royal Ontario Museum, provided a wonderful opportunity to meet and network with other delegates. The number of attendees surpassed all expectations; over 650 participants were present, from many countries and continents. Equally diverse were the professions and organizations in attendance, including psychologists, social workers, physicians, nurses, health centres, social services, universities and other training institutions. Dennis Magill of the University of Toronto and Rick Blickstead of the Wellesley Institute (Toronto) presented opening remarks. Although the welcome was kept short, it was hard for the speakers to contain their enthusiasm for what they considered the next big step in community participatory research; an approach which embodies advocacy and policy.

For me, one of the greatest dilemmas in attending a conference of this nature is deciding which of the many concurrent sessions to attend, realizing that one can only experience a mere fraction of the offerings. To convey the tenor of the conference, I here provide brief summaries and personal highlights for the seminars and workshops that I attended.

## Mobilizing Community Partnerships for Procedural Justice and Social Change

Jeff Denis - Department of Sociology, Harvard University

Tony DiPede - Wellesley Institute

Dennis Magill - Department of Sociology, University of Toronto

The speakers reviewed the history of the Wellesley Hospital and its transformation (during the 1990s), which involved a partnership with the community. Part of this transformation involved a change in the paradigm of health care from a traditional medical model to one based on the social determinants of health and their implications for the broader community. An important concept in this transformation was that of "justice", two ideas of which were covered: distributive justice (allocation of outcomes) and procedural justice (the process by which outcomes/distributions are decided). Studies have shown that procedural justice has a more significant impact in facilitating a civic culture (trust, loyalty and respect). Certainly one of the messages from this presentation is that a crisis (i.e., hospital closures under the Harris government), although not desirable, can be a catalyst for progressive change.

## Making Sure Research is Used

Jose Ramon Fernandez - San Francisco State University

Carolyn Hunt - University of California

Daniel Bao - San Francisco

This was a very practical and important presentation for any organization involved with knowledge mobilization. The speakers premised their presentation on the idea that researchers are not trained, rewarded or supported to disseminate their findings. Their guidelines included creating a dissemination plan for all studies, providing progress report, and allocating budget resources to dissemination. Recognition was given to barriers cited by researchers, including the little or no value given to non-traditional dissemination by universities, government funding restrictions on publishing, lack of time and money, and lack of knowledge regarding effective community dissemination. For more information on the San Francisco State University Recommendations for Research Dissemination, check out [www.caps.ucsf.edu/projects/collaboration/dissemination.php](http://www.caps.ucsf.edu/projects/collaboration/dissemination.php).

## Unnatural Causes: Is Inequality Making Us Sick?

Film produced by the California Newsreel with Vital Pictures, Inc.

This film screening was presented by the National Minority Consortia Public Impact Campaign in association with the Joint Centre Health Policy Institute. The documentary investigates the sources of health disparities in the United States. It is scheduled for release in the fall of 2007 as part of a campaign to promote health-equity "upstream" policies.

*con't on following page*

## Community-Campus Partnerships: An Overview and Personal Impressions

### con't from previous page

This provocative film investigates the finding that there is more to our health than bad habits, health care or unlucky genes - that the social conditions in which we are born, live and work profoundly affect our well-being and our longevity (*social determinants of health*). The film was a catalyst for much discussion and debate at the conference. All the participants agreed with the premise of the documentary (i.e., the social determinants of health) but realized that the root causes are deep and require ideological exploration. One participant from the United States shared his understanding of the root causes, namely, a culture of militarization, corporate globalization (which disempowers communities), and the related gap between the wealthy and the impoverished. No clear consensus was reached on how these issues could be resolved. However, the group did agree that more expertise was needed, particularly in the areas of politics, economics, and possibly other disciplines. I believe that issues involving the social determinants of health will not only continue to be divisive; they will also accelerate in urgency as disparities continue and other factors, such as environmental degradation, reduce vital resources while human demand grows.

### A Day in the Life: Stories and Photographs of Health and Homelessness in Toronto

Nancy Viva David Halifax - University of Toronto  
Erica Khandor & Jim Meeks - Street Health Community Nursing Foundation, Toronto

This presentation explored three social determinants of health using photovoice techniques--housing/homelessness, income/poverty, and social exclusion--through the application of an arts-informed approach to community-based research. Photovoice is considered an effective technique because it gives a voice to persons who are homeless or live in poverty and facilitates outreach and advocacy through a multimedia approach.

### Using Photovoice Methods to Work for Change. The Story of “Looking Out/Looking In: Women, Poverty and Public Policy”

Vanessa Charles- Saskatoon Anti Poverty Coalition  
Kay Wilson - Prairie Women’s Health Centre of Excellence

The presenters described their community and campus partnership in creating a successful photovoice exhibit that empowered marginalized women, profiled grass roots action, and contributed to the development of public health policy. The unique capacity of the photovoice technique to convey the multiple dimensions (emotional, cognitive, visual, etc.) of a story were clearly demonstrated.

### Research, Mobilization and Advocacy: Effective Collaboration

Michael Goldberg- First Call, British Columbia Child and Youth Advocacy Coalition  
Penny Gurstein - University of British Columbia

The session focused on a collaboration of a province-wide child and youth advocacy organization with a university-based team of researchers. The purpose was explained as public education, community mobilization, and policy advocacy to insure all children and youth have opportunities and resources to achieve their full potential. One of the goals of the session was to recognize the often missing components of community mobilization and political pressure in translating research into policy. Additional information about the First Call collaborative can be obtained by going to: [www.firstcallbc.org](http://www.firstcallbc.org). In a way similar to that in the earlier discussion on Making Sure Research is Used, this session suggested translating research findings into a popular format for dissemination and building sustained community mobilization into the research proposal. It was acknowledged that evidence alone does not drive policy--political will is needed, and this usually takes place on the level of media activity.

In conclusion, the Campus-Community Partnership for Health is a very relevant organization for the Centre for Research on Educational and Community Services. Our CCPH membership can have mutual benefits, as both CRECS and CCPH value knowledge production and the transfer of research-based information, community partnerships, underlying determinants of health, and strategies for authentic change. I will provide further information on topics related to our involvement with CCHP in future editions of Impact.



## Événements prochains / Upcoming Events/

### Valorisation des rôles sociaux

Conférence internationale concernant la valorisation des rôles sociaux 2007 à  
Ottawa, Canada

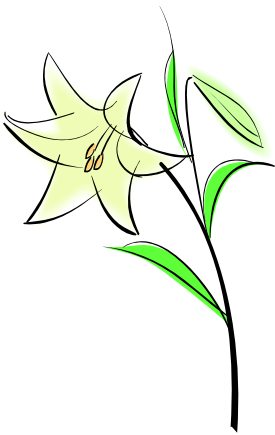
14 au 18 mai

Organisée par : Services aux enfants et adultes de Prescott-Russell  
Institut Valor  
L'Université d'Ottawa

La valorisation des rôles sociaux (VRS) est une théorie générale des services et des relations fondée sur des connaissances empiriques concernant la conception et l'actualisation des services et des relations, formels et informels, au profit de toutes les catégories de personnes, peu importe leurs besoins et leur situation, mais particulièrement des personnes dévalorisées ou qui risquent de le devenir.

Nos rôles sociaux constituent la base de notre participation à la vie collective de tous les jours. Cette conférence vise à examiner la vie de personnes qui sont dévalorisées (notamment en raison de leur âge avancé, d'un handicap, de la pauvreté ou d'une maladie mentale) et la façon dont les individus, les services à la personne et la société en général contribuent à cette dévalorisation, de même que les actions positives qui peuvent être entreprises pour améliorer les conditions de vie des personnes marginalisées.

Pour obtenir davantage d'information sur la conférence concernant la valorisation des rôles sociaux, visitez le [www.vrs-srv2007.ca](http://www.vrs-srv2007.ca).



### Social Role Valorization

2007 International SRV Conference in Ottawa, Canada

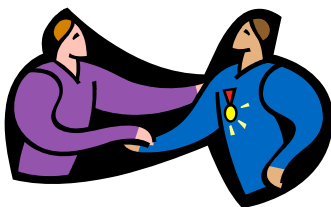
May 14 -18

Hosted by: Prescott-Russell Services to Children and Adults  
Valor Institute  
The University of Ottawa

Social Role Valorization (SRV) is a high-level service and relationship theory based on empirical knowledge for the design and rendering of both formal and informal services and relationships to any kind of people with any kind of need or condition, but especially those who are devalued or at risk there of.

Our social roles form the basis of our participation in ordinary community life. This conference examines the lives of persons who are de-valued, (i.e., because of being old, disabled, mentally ill or living in poverty) and how individuals, human services and the wider society contribute to this devaluation, and what positive steps can be taken to ameliorate the life circumstances of marginalized persons.

For more information on the SRV conference, go to [www.vrs-srv2007.ca](http://www.vrs-srv2007.ca).



## 2007 Canadian Evaluation Student Case Competition Underway

After a one-year hiatus the CES Student Case Competition was revived this year by the CES – National Capital Chapter. <http://competition.evaluationcanada.ca> This year 18 teams at universities from Newfoundland to British Columbia competed in Round 1 of the competition. The Faculty of Education, University of Ottawa entered a team coached by Professor Brad Cousins. Team members Sumbal Malik, Sophie Saleem, Eddie Rideout, and Stacey Moreau eagerly await the panel's decision; the top three teams in Round One will compete in the Finals at the annual meeting of CES in Winnipeg June 3-6.

**Centre de recherche  
sur les services  
éducatif et  
communautaire**

**Centre for Research  
on Educational and  
Community Services**



**Université d'Ottawa /  
University of Ottawa /  
34 Stewart  
Ottawa, ON  
K1N 6N5  
613-562-5800  
ext. 1856**

[crcs@uottawa.ca](mailto:crcs@uottawa.ca)



**uOttawa**

L'Université canadienne  
Canada's university

**Nous sommes sur  
l'Internet!  
We're on the Web!**  
*Venez voyez-nous à:  
See us at:*

<http://www.sciencessociales.uottawa.ca/crcs>

## Liste des employés / Personnel List

Robert Flynn	Directeur CRECS/Director CRECS
Brad Cousins	Codirecteur CRECS/Co-Director CRECS
Tim Aubry	Chercheur principal et ancien directeur du CRSEC/ CRECS Senior Researcher & Past Centre Director
David Vincent	Coordonnateur du CRSEC/CRECS Coordinator
Ginette Peterson	Agente administrative/Administrative Officer
Alice Atallah	Secrétaire administrative/Administrative Secretary
Meagan Miller	Assistante administrative RTÉ/Administrative Assistant – WSP
Tiffany Locke	Assistante administrative RTÉ/Administrative Assistant – WSP
Shaye Moffat	Coordonnatrice de recherche – projet S'occuper des enfants en Ontario/ Research Coordinator - Ontario Looking After Children Project
Marie-Pierre Paquet	Assistante de recherche/Research Assistant
Cynthia Vincent	Associée de recherche – projet S'occuper des enfants en Ontario/Research Associate – Ontario Looking After Children Project
Jaclynne Smith	Coordonnatrice de projet – Programme hors tribunal/Project Coordinator – Court Outreach Program
Sarah Pantin	Interne en psychologie clinique/Clinical Psychology Intern
Rebecca Nemiroff	Adjointe à la recherche/Graduate Research Assistant
Sarah Birnie	Adjointe à la recherche/Graduate Research Assistant
Michèle La Roche	Coordonnatrice de l'évaluation – projet Communities That Care de Prescott- Russell/Evaluation Coordinator – Prescott-Russell Communities That Care Project

## Chercheurs principaux au CRSEC de l'Université d'Ottawa CRECS Senior Researchers at the University of Ottawa/

Doug Angus – École de gestion  
Bernie Andrews – Faculté d'éducation  
John Sylvestre – École de psychologie  
Betsy Kristjansson – École de psychologie  
Ron Melchers – Département de criminologie  
Marie Drolet – École de service social  
Caroline Andrew – École d'études politiques  
Raymond Leblanc – Faculté d'éducation

Marta Young – École de psychologie  
Marielle Simon – Faculté d'éducation  
David Smith – Faculté d'éducation  
Colla Jean MacDonald – Faculté d'éducation  
Swee Goh – École de gestion  
Jeff Keshen – Département d'histoire  
David Trumpower – Faculté d'éducation  
Michel Rousseau – Faculté d'éducation